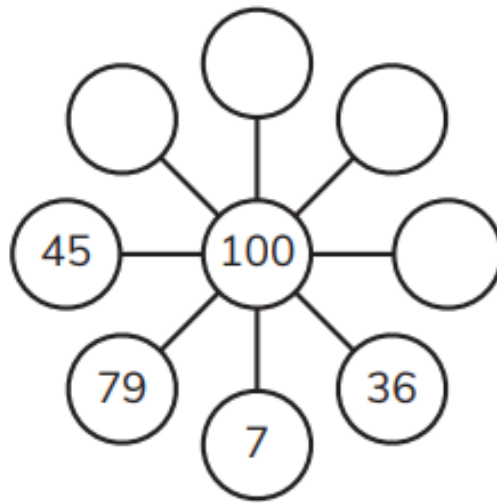


Name			
Class		Term	2
Year	4	Quiz Number:	3

1) Complete the spider diagram so that opposite numbers total 100.



(2)

2) Write the missing number.

..... - 598 = 505

123 + = 935

$$\frac{7}{9} - \boxed{} = \frac{2}{9}$$

$$1 - \boxed{} = \frac{1}{8}$$

(4)

Aspire International School

3) Round 3509 to the nearest 100

..... (1)

4) A number rounded to the nearest 10 is 340.
Find all the possible numbers it could be

..... (1)

5) What are the multiples of 10 that can go in the box?

$$3160 < \boxed{} < 3190$$

..... (1)

6) Complete the calculation $678 + 345$

$$\begin{array}{r}
 678 = \boxed{} + \boxed{70} + \boxed{} \\
 345 = \boxed{300} + \boxed{} + \boxed{} \\
 \hline
 \boxed{} + \boxed{} + \boxed{} = \boxed{}
 \end{array}$$

(2)



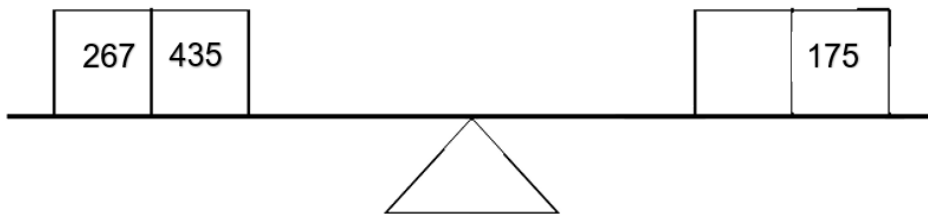
7)

Write the missing numbers.

$$8 \div 2 = \square \div 4 = 32 \div \square$$

(2)

8) Write the missing number so that the scales balance

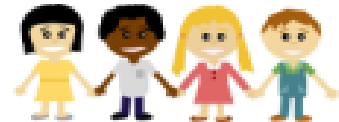


(1)

9) 239 children get into teams of 6.

How many teams of 6 can they make?

How many children will not be in a team of 6?



.....

(2)

10) Find the difference between 425 and 318

.....

(1)

11)

Draw a line to join each description to the type of angle.

The angle in a quarter turn

An angle less than 90°

An angle greater than 90° and less than 180°

acute angle

obtuse angle

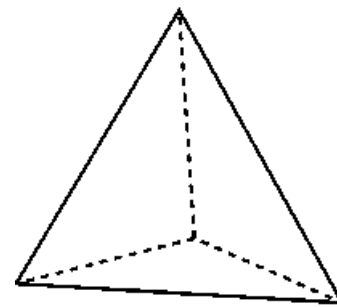
right angle

(3)

12) Complete these sentences

A tetrahedron is the same as

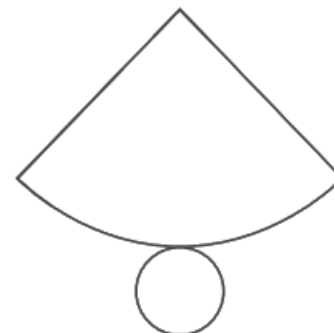
It has: faces, edges and Vertices.



(2)

13) The name of the shape is

it has faces, edges andvertices .



(2)

Aspire International School

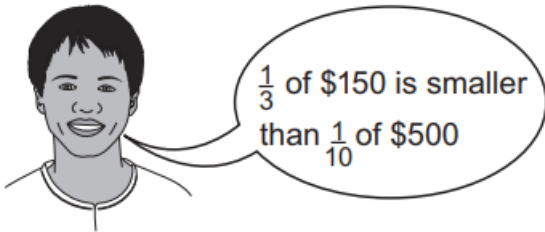
14) I'm thinking of a number.

When I double it my answer is 38.

What is my number?

..... (1)

15) Oliver says

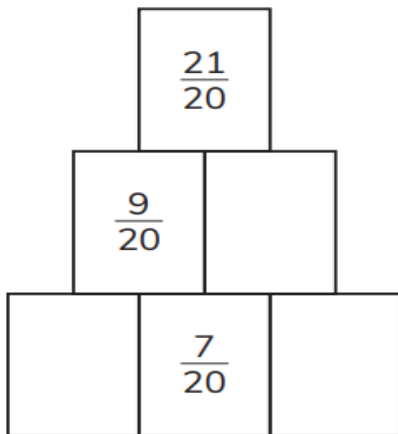


Explain why Oliver is not correct.

..... (1)

16) In the diagram the fraction in each box is the sum of the two fractions below it.

Write the missing fractions



(2)

17)

Ahmed shades part of the shape.



He then shades more of the shape.



Write this as an addition statement.

$$\begin{array}{|c|} \hline \square \\ \hline \square \\ \hline \end{array} + \begin{array}{|c|} \hline \square \\ \hline \square \\ \hline \end{array} = \begin{array}{|c|} \hline \square \\ \hline \square \\ \hline \end{array}$$

(2)

Good Luck 😊

Total Marks

/