







Balanced or unbalanced forces?

Grade 3 Science Worksheet

Look at each diagram. Write **balanced forces** or **unbalanced forces**.

 _____	 _____
 _____	 _____
 _____	 _____

Forces affect motion

Grade 2 Science Worksheet



You can use **force** to make something move, stop it, speed it up, slow it down, change its direction, or change its shape.

Draw lines to match.



Catch a ball. ●

● start moving



Use your brakes. ●

● stop moving



Hit a moving ball with a bat. ●

● slow down



Squeeze clay. ●

● speed up



Kick a ball. ●

● change direction



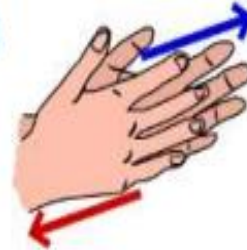
Pedal harder. ●

● change shape



Friction is caused when things rub against each other. It slows things down.
Rough surfaces cause more friction than smooth surfaces.

Try this: Rub your hands together. You can feel friction between your hands. Rub your hand on a few different surfaces like a table and your clothes.



Which surface had the most friction? How do you know?

Circle one:

- You will slide faster if there is **more / less** friction on a playground slide.
- Which material would make more friction if you rubbed your hand on it? **tile / carpet**
- To slow down a speeding bike, brakes create **a little / a lot** of friction against the tires.
- If you tried to walk on ice you might slip because there is **too much / too little** friction.
- It is easier to pedal a bike on **a dirt trail / a smooth road** because there is **more / less** friction.



What Forces can do?

Fill in the blank with the correct word

*direction

*shape

*stop

*start

*speed up

*slow down

1. A force can an object to

move



2. A force can make a moving object



3. A force can change the of a

moving object.



4. A force can change an object



5. A force can an object



6. A force can an object





ASPIRE
INTERNATIONAL SCHOOL

Aspire International School