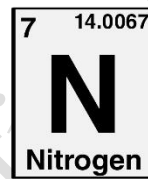
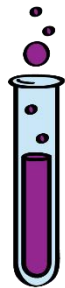
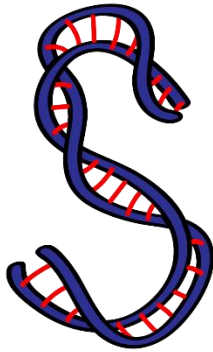




**ASPIRE**  
INTERNATIONAL SCHOOL



**Science Department**

**2023/2024**

**Year 8**

**Term 1, Week 1**

**Worksheets 1**

## **Model answer of worksheet 1**

**Name:** .....

**Class:** .....

1

Here are some plants growing in a pot.



(a) The plants are put in a cupboard with no light for a few days.

What will they look like after being in the cupboard?

.....  
Pale yellow leaves  
.....

[1]

(b) The plants are taken out of the cupboard.

They are put in the light for a few days.

What will they look like after a few days in the light?

.....  
Green healthy leaves  
.....

[1]

(c) The plants are put back into the cupboard with no light for a few weeks.

What will happen to the plants after a few weeks in the cupboard?

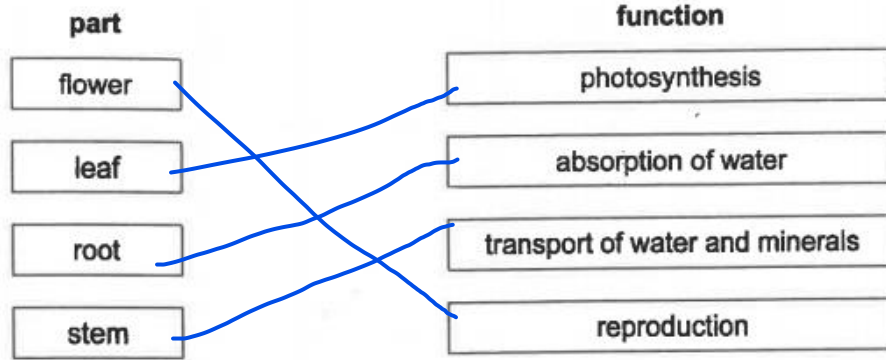
.....  
They'll die  
.....

[1]

2

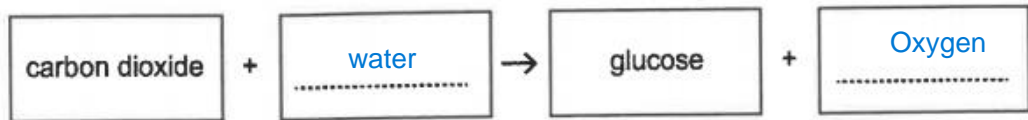
(a) The boxes show some parts of plants and the function of the parts.

Draw a line from each part to match its function.



[3]

(b) Complete the word equation for photosynthesis.



[2]

3

Pierre and Carlos investigate how light affects plant growth.

(a) Write down **two** factors they need to keep the same in their investigation.

- 1 ..... Volume of water .....
- 2 ..... Amount/ type of soil ..... [2]

(b) Write down the factor they change.

..... Amount of light ..... [1]

(c) What do they measure to get their results?

..... The height / length/ size / mass of the plant ..... [1]

4

Marta grows tomato plants in her greenhouses.



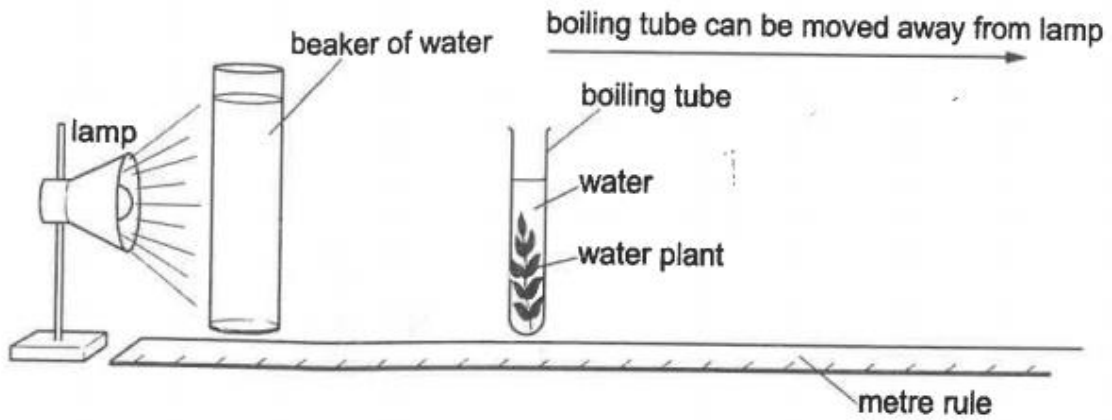
(a) Name the process plants use to make their own food.

..... Photosynthesis ..... [1]

5

Hassan investigates how light affects photosynthesis.

Here is the equipment he uses.



He counts the number of bubbles of gas the water plant makes in one minute.

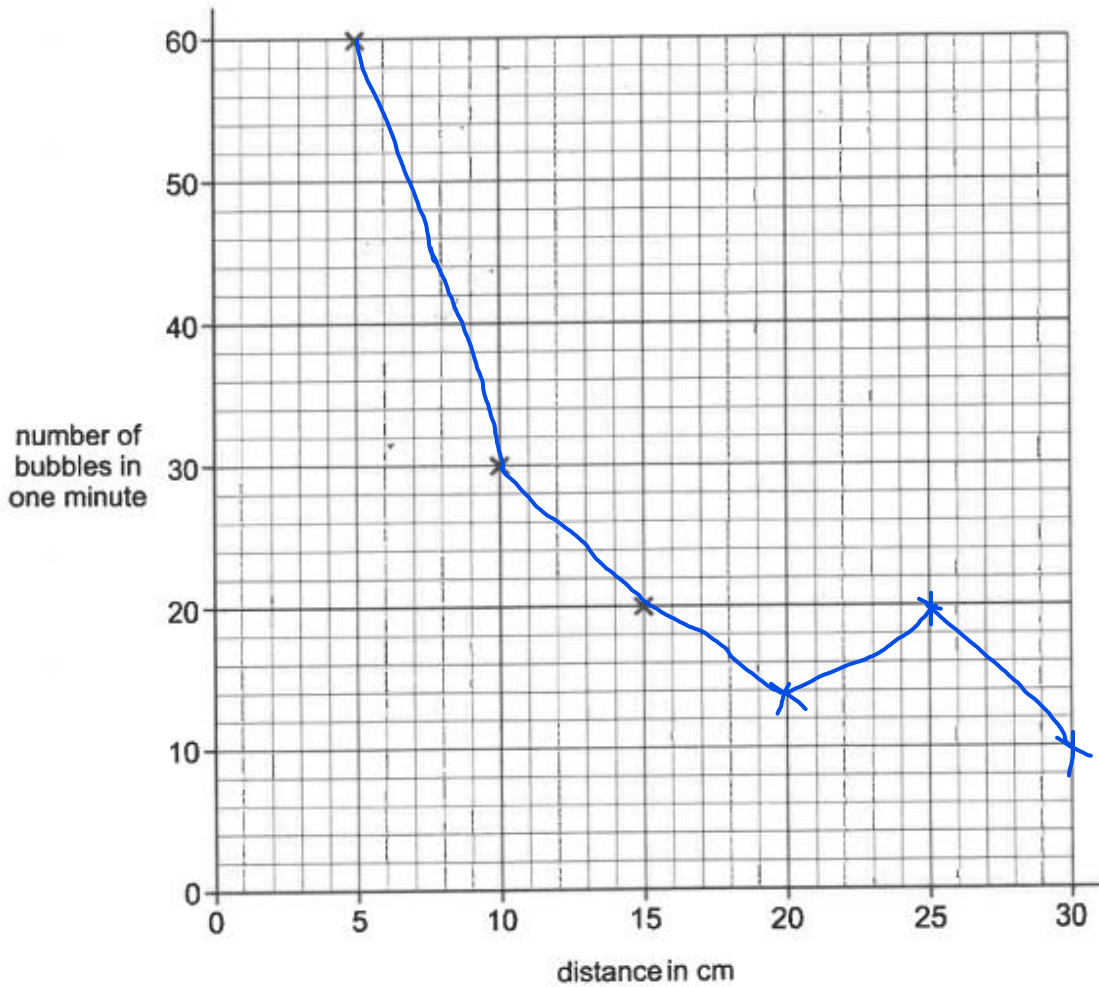
He does this with the water plant at different distances from the lamp.

Here are Hassan's results.

distance of water plant from lamp in cm	number of bubbles of gas in one minute
5	60
10	30
15	20
20	15
25	20
30	10

(a) Draw a line graph and join the points with a curved line.

The first three points have been plotted for you.



(3)

(b) Hassan thinks one of the results may be wrong.

Complete the sentences to explain how you can tell the result may be wrong.

The result that may be wrong is the one for a distance of ..... 25 ..... cm.

This is because ..... it is not on the same curve/ not in the same pattern as others ..... [2]

(c) Complete the conclusion.

As the water plant is moved away from the lamp, the amount of light on it

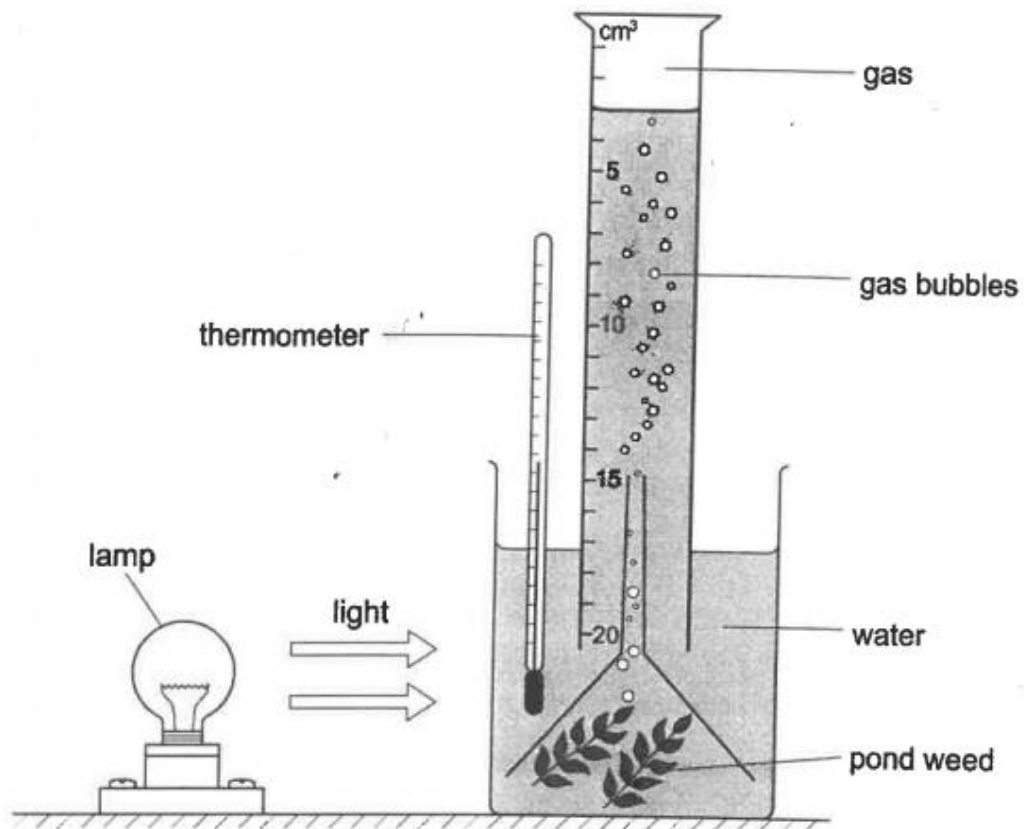
..... decreases .....

This makes the rate of photosynthesis ..... decrease ..... [2]

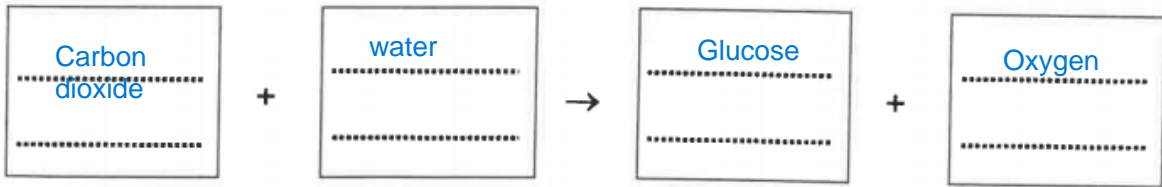
6

A group of students investigate photosynthesis using pond weed.

The diagram shows the equipment they use.



(a) (i) Write down the word equation for photosynthesis.



[2]

(ii) The diagram shows the volume of gas they collect after 5 minutes.

Write down this volume.

3 cm<sup>3</sup>

[1]

(b) The students want to increase the volume of gas the pond weed makes in 5 minutes.

(i) The students use a drinking straw to bubble some of their breath into the water.

The volume of gas the pond weed makes increases.

Explain why.

Because the breath contains more carbon dioxide which the plants need for photosynthesis [1]

(ii) Suggest and explain one other way the students could increase the volume of gas this pond weed makes in 5 minutes.

Move the lamp closer/ use more lamps to provide the plant with more light needed for photosynthesis

[2]