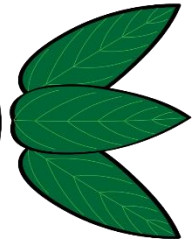
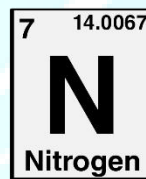
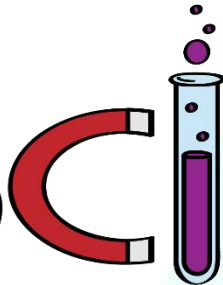
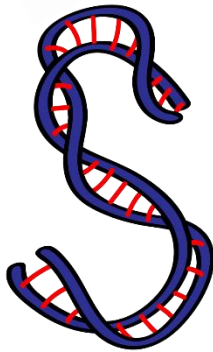




ASPIRE
INTERNATIONAL SCHOOL



Science Department

2023/2024

Year 4

Term 1, Week 2

ASPIRE

INTERNATIONAL SCHOOL

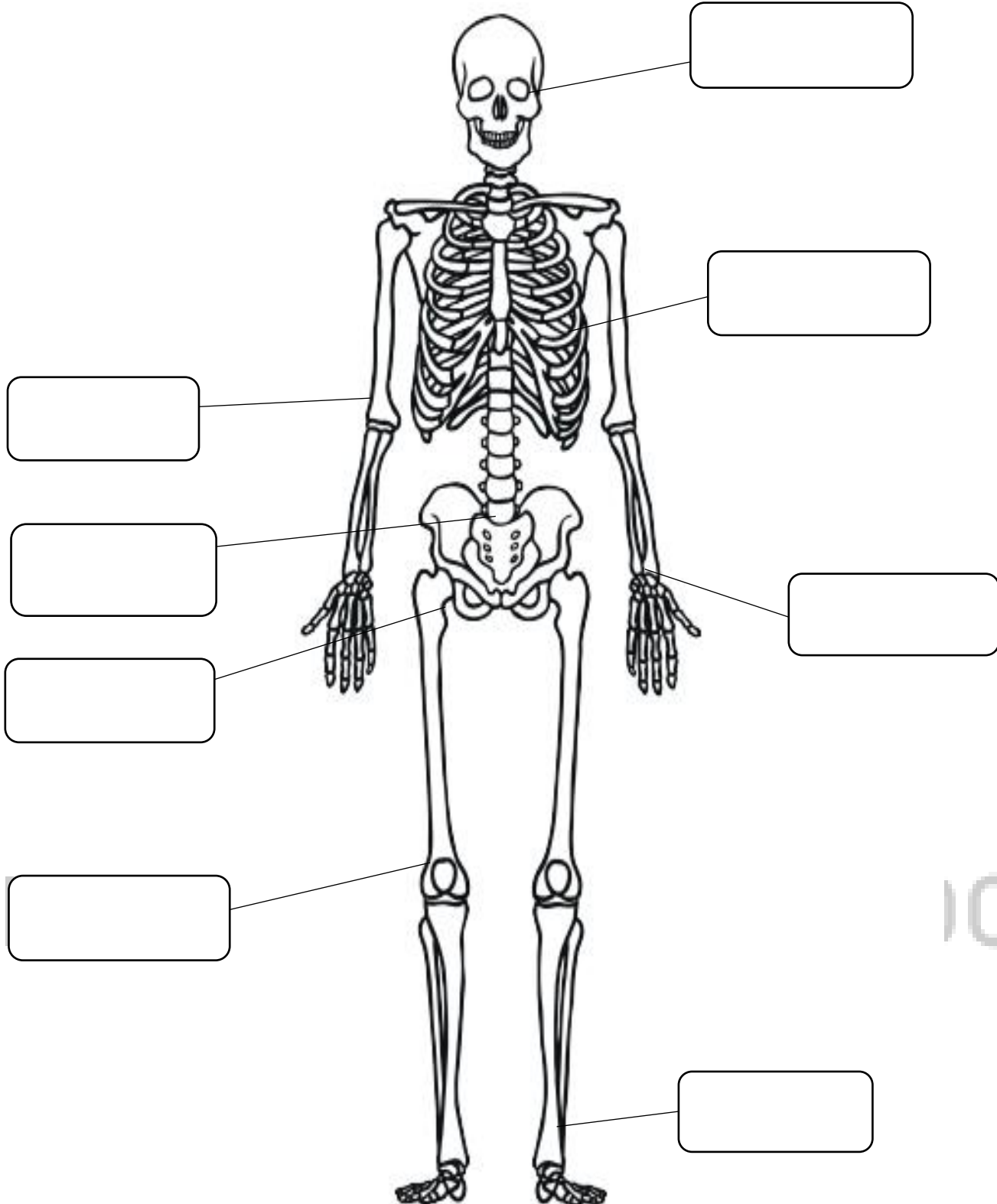
Name:

Class:



1-Label the following diagram:

Skeleton





2- Draw a line to match each word with its meaning.

The first one has been done for you.

Word	Meaning
Skeleton	the bones in your chest
Bones	the bones in your back
Skull	the bone that joins your leg to the upper part of your body
Rib cage	the hard, strong frame that supports our body
Spine	the bone that moves when we eat or talk
Hip	hard parts that form the skeleton
Jaw	the bones of the head

3-Answer the following questions:

1 What are skeletons made of?

2 Why must skeletons be hard and strong?

3 Why do you think the bones of your skeleton are different sizes and shapes?

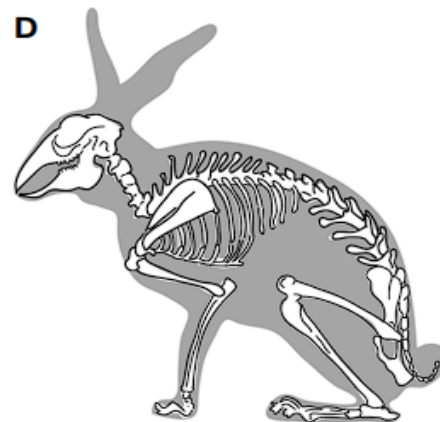
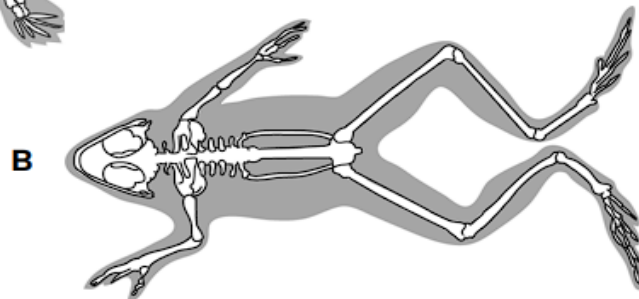
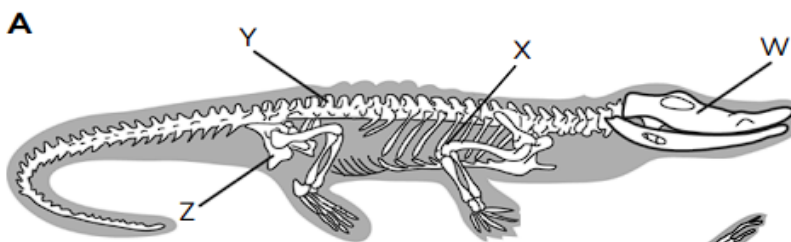
4 Bones are not very heavy. How do you think this helps animals?



4-Match the skeletons with the animals they come from.

Write the letter of each skeleton next to the name of the animal it comes from.

Animal	Skeleton
Bird	
Rabbit	
Frog	
Crocodile	



4 Name the parts on Skeleton A.

W is the _____

X is the _____

Y is the _____

Z is the _____

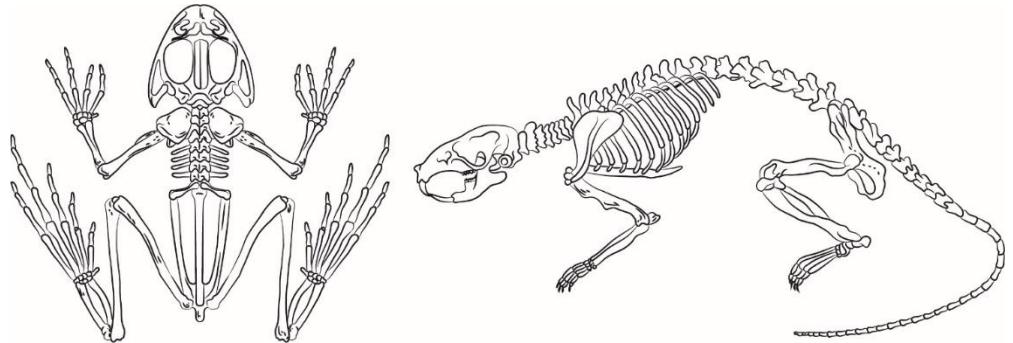


5-Look at the drawings of different skeletons.

Follow the instructions to identify the different bones.

2) Identify and colour in the following bones in each skeleton. Use these colours:

- 1 red – jaw
- 2 yellow – skull
- 3 blue – rib cage
- 4 green – spine
- 5 orange – hip
- 6 brown – leg bones
- 7 purple – arm bones

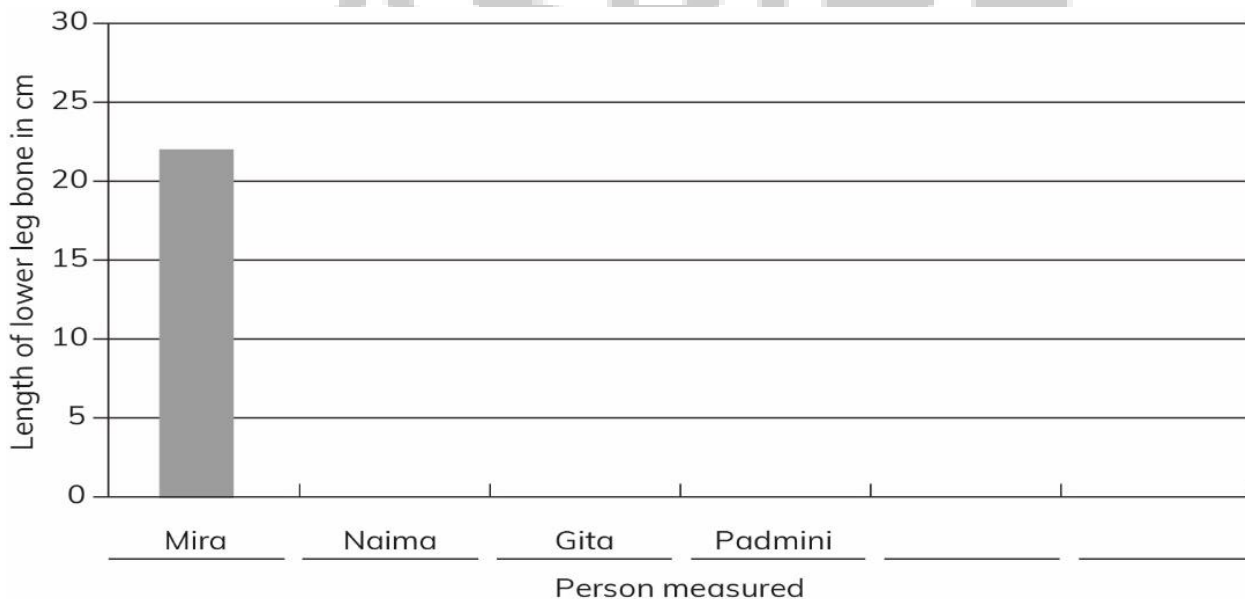


6-Draw a graph of bone length

Mira’s group measured the lengths of their lower leg bones. These are their results.

Name	Length of bone in cm
Mira	22
Naima	25
Gita	20
Padmini	23

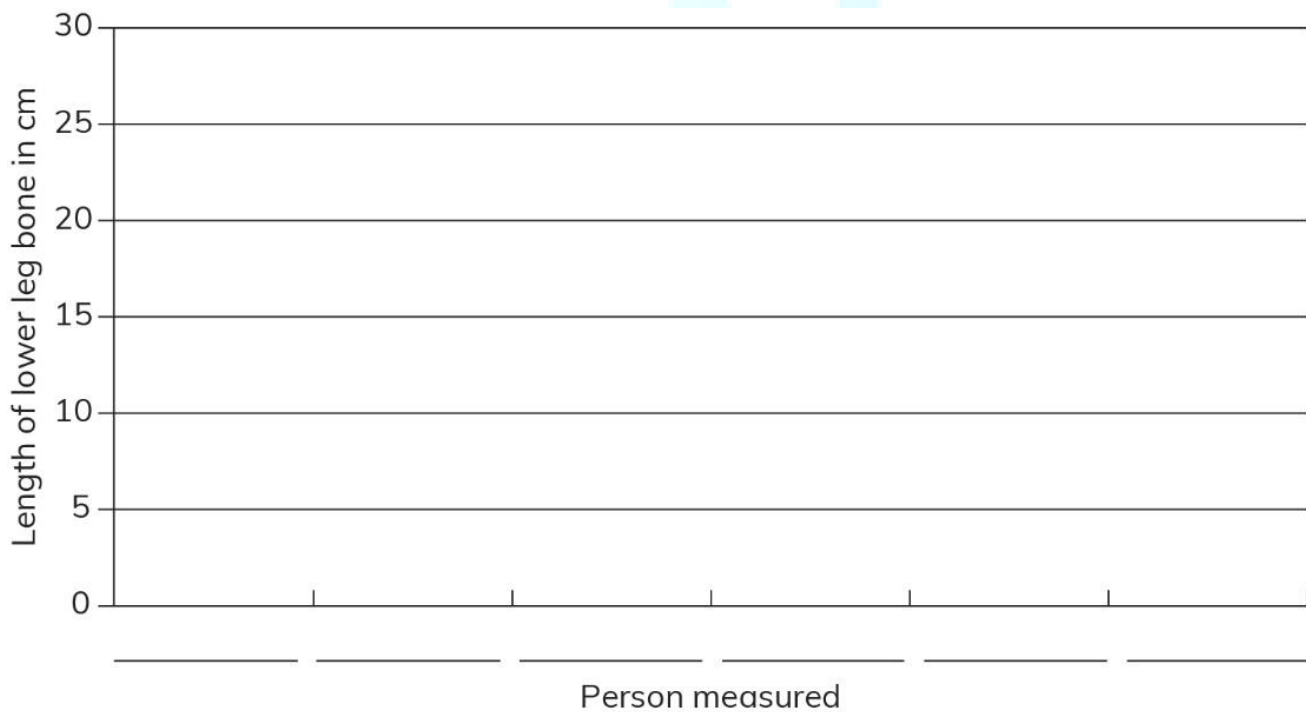
Draw a bar chart of their results. We have drawn one of the bars for you.



7-Draw a graph of bone length

Mira's group measured the lengths of their lower leg bones. These are their results.

Name	Length of bone in cm
Mira	22
Naima	25
Gita	20
Padmini	23



1 Draw a bar chart of their results.

a Whose leg bone was longest? _____

b Whose leg bone was shortest? _____