



Year 7

Maths Revision

Name

I 

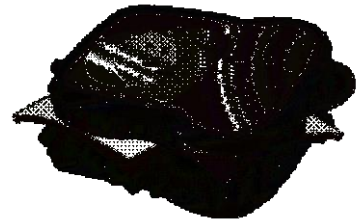
Math



1. Look at the menu below:



Tea	60p
Coffee	80p
Cola	60p
Sandwiches	£1.80
Beef burger	£2.95



(a) Work out the cost of three beef burgers.

.....
.....

(b) Work out the cost of two sandwiches and five cups of coffee.

.....
.....

(c) How many cups of tea can be bought with £5?

.....
.....

6 marks

2. Work out the next three numbers in each of these sequences:

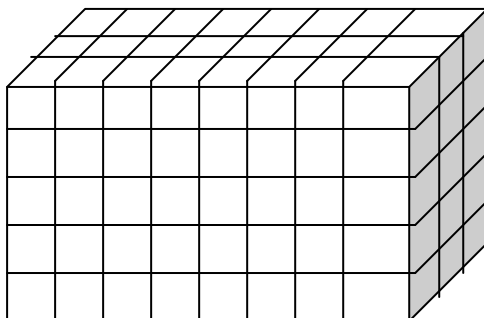
(a) 20 17 14

(b) 1 4 9 16

(c) 5 6 8 11 15 20

5 marks

3. How many cubes would you need to build the following cuboid?



Volume =

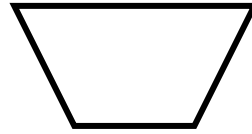
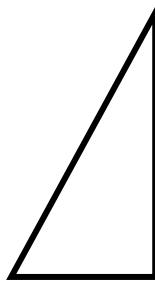
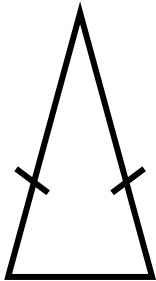
2 marks



4. (a) For each of the shapes below, choose a description and write it on the dotted line:

- (i) parallelogram (ii) isosceles triangle (iii) trapezium
(iv) scalene triangle (v) kite (vi) pentagon

(b) Draw in any lines of symmetry that the shapes have.



.....

.....

.....

6 marks

5. An equilateral triangle has three sides the same length. What is the size of one of the angles?

.....

2 marks

6. (a) Convert 13.2 metres into centimetres

(b) Convert 430 millimetres into centimetres

(c) Convert 2.1 kilometres into metres

3 marks

7. (a) What is $\frac{1}{4}$ of 68 ?

(b) What is $\frac{3}{5}$ of 20?

(c) What is 0.1 of £40 ?

(d) Simplify the fraction $\frac{24}{36}$

(e) What is 0.03 re-written as a fraction ?

(f) Find 1% of 200 kg

(g) Work out $\frac{1}{2} + \frac{1}{4}$

9 marks



8. Work out the answers to the following. Show your workings clearly.

(a) $23.1 - 16.7$

(b) 821×16

(c) 4.1×7

(d) $42.3 \div 3$

5 marks

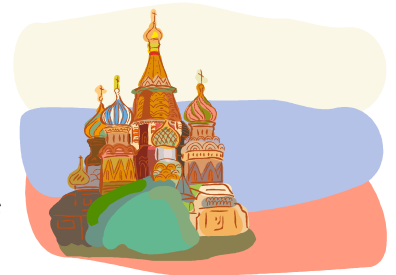
9.



In New York it is 23°C and in Moscow it is -5°C . What is the temperature difference?

2 marks

.....



10. If $a = 5$ and $b = 10$

Work out:

(i) $b - a$

(ii) $4b$

(iii) $2a^2$

4 marks

11. (a) Write down the factors of 25

(b) Write down the factors of 30

(c) Write down the highest common factor of 25 and 30

(d) Write down the prime factors of 30

5 marks